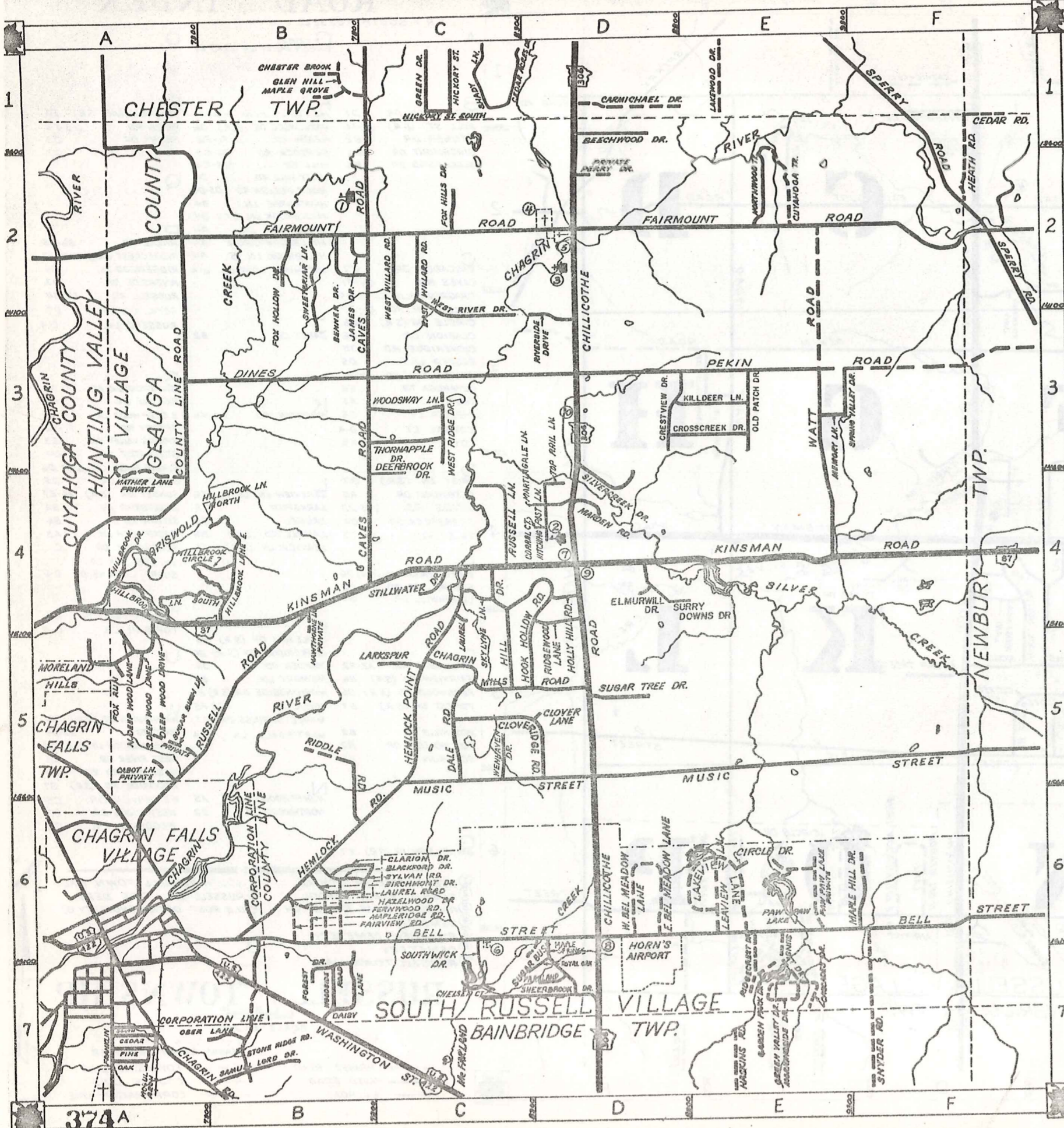




# ROAD INDEX

S.R. = SOUTH RUSSELL



<b>A</b>		<b>G</b>	GREEN VALLEY DR. (S.R.) E7	<b>O</b>	OLD PATCH DR. E3
<b>B</b>	BEECHWOOD DR. D1	<b>H</b>	HEMLOCK POINT RD. C5	<b>P</b>	PAW PAW LAKE (S.R.) E6
	BELL ST. (S.R.) B6-F6		HAZELWOOD DR. (S.R.) B6		PEKIN RD. D3-F3
	BENNER DR. B2		HEATH RD. F1-F2		PERRY DR. D2
	BIRCHMOUNT DR. B6		HEMLOCK RD. B6-C5		PARKLAND DR. D7
	BLACKFORD DR. B6		HILL DR. C5-C4	<b>Q</b>	
			HOLLY HILL RD. D4		
			HOOK HOLLOW RD. D5-D4		
			HAWTHORNE LN. B4		
			HILLBROOK LN. E+N. B4		
			HILLBROOK DR. A4	<b>R</b>	
			HILLBROOK CIRCLE B4		RIDDLE RD. B6-B5
			HILLBROOK LN. S. A4		RIDGECREST DR. (S.R.) E6-E7
			HITCHING POST LN. D-4		RIDGEWOOD LN. D4
<b>C</b>	CASCADES DR. E7				RIVERSIDE DR. D3
	CAVES RD. C4-C1				RUSSELL RD. A5-B4
	CHAGRIN MILLS RD. C5-D5				ROYAL OAK DR. D7
	CHILLICOTHE RD. D1-D7				RUSSELL LN. C-4
	CIRCLE DR. (S.R.) E6	<b>J</b>	JAMES DR. B2		
	CLARION DR. B6				
	CLOVERIDGE RD. D5				
	CLOVER LN. D5				
	COUNTY LINE RD. A4-A1				
	CUYAHOGA TR. E2	<b>K</b>	KINSMAN RD. A4-F4		
	CABOT LN. A5		KILLDEER LN. E3	<b>S</b>	
	CHELSEA CT. C6				SILVERCREEK DR. D4
	CORRAL CT. D-4				SKYLINE LN. C4
	COY LN. A5				S. DEEP WOOD LN. A5
	CRESTVIEW DR. D3				SPERRY RD. F1-F2
	CROSSCREEK DR. E3				SPRING VALLEY DR. E3
<b>D</b>	DAISY LN. (S.R.) B7				STILLWATER DR. C4
	DEEP WOOD DR. A5	<b>L</b>	LAKEVIEW LN. (S.R.) E6		SUGAR BUSH LN. (S.R.) D6
	DINES RD. A3-D3		LARKSPUR C5		SUGAR TREE DR. D5
	DEERBROOK DR. C4		LAUREL C4		SUNSET DR. (S.R.) E6-E7
	DALE RD. C5		LAUREL RD. (S.R.) B6		SWEETBRIAR LN. B2
			LEAVIEW LN. (S.R.) E6		SYLVAN RD. B6
<b>E</b>					SUGAR BUSH LN. A5
	E. BEL MEADOW LN. (S.R.) D6				SOUTHWYCK DR. C6
	EAST WILLARD DR. C2				SHEERBROOK DR. D7
	ELMURWILL DR. D4				SURRY DOWNS DR. D4
<b>F</b>					
	FAIRMOUNT RD. A2-F2	<b>M</b>	MAPLE HILL DR. (S.R.) F6		
	FAIRVIEW RD. (S.R.) B6		MAPLERIDGE RD. (S.R.) B6		
	FAIRWOOD RD. (S.R.) B6		MARDEN RD. D4	<b>U</b>	
	FOREST DR. (S.R.) B7		MEMORY LN. E3		
			MORNINGSIDE DR. (S.R.) E7		
			MUSIC ST. C5-F5		
			MAPLE SPRINGS DR. D7	<b>W</b>	
			MARTINGALE LN. D-4		WASHINGTON ST. (S.R.) B7
					WATT RD. E2-E4
					W. BEL MEADOW LN. (S.R.) D6
					WEST RIVER DR. C3
					WEST WILLARD RD. C2
					WOODSIDE RD. (S.R.) B7
					WENHAVEN DR. C5
					WEST RIDGE DR. C3
					WOODSWAY LN. C3
		<b>N</b>	N. DEEP WOOD LN. A5		
			NORTHWOOD TR. E2		
<b>G</b>					
	GARDEN PARK DR. (S.R.) E7				

- ① WEST WOOD ELEM. SCHOOL
- ② RUSSELL ELEM. SCHOOL
- ③ RIVERVIEW BIBLE BAPTIST CH.
- ④ CEMETERY
- ⑤ RIVERVIEW CEMETERY
- ⑥ CEMETERY
- ⑦ RUSSELL TOWN HALL
- ⑧ SOUTH RUSSELL TOWN HALL
- ⑨ RUSSELL VOL. FIRE DEPT.
- ⑩ U.S. POST OFFICE (NOVELTY, O)

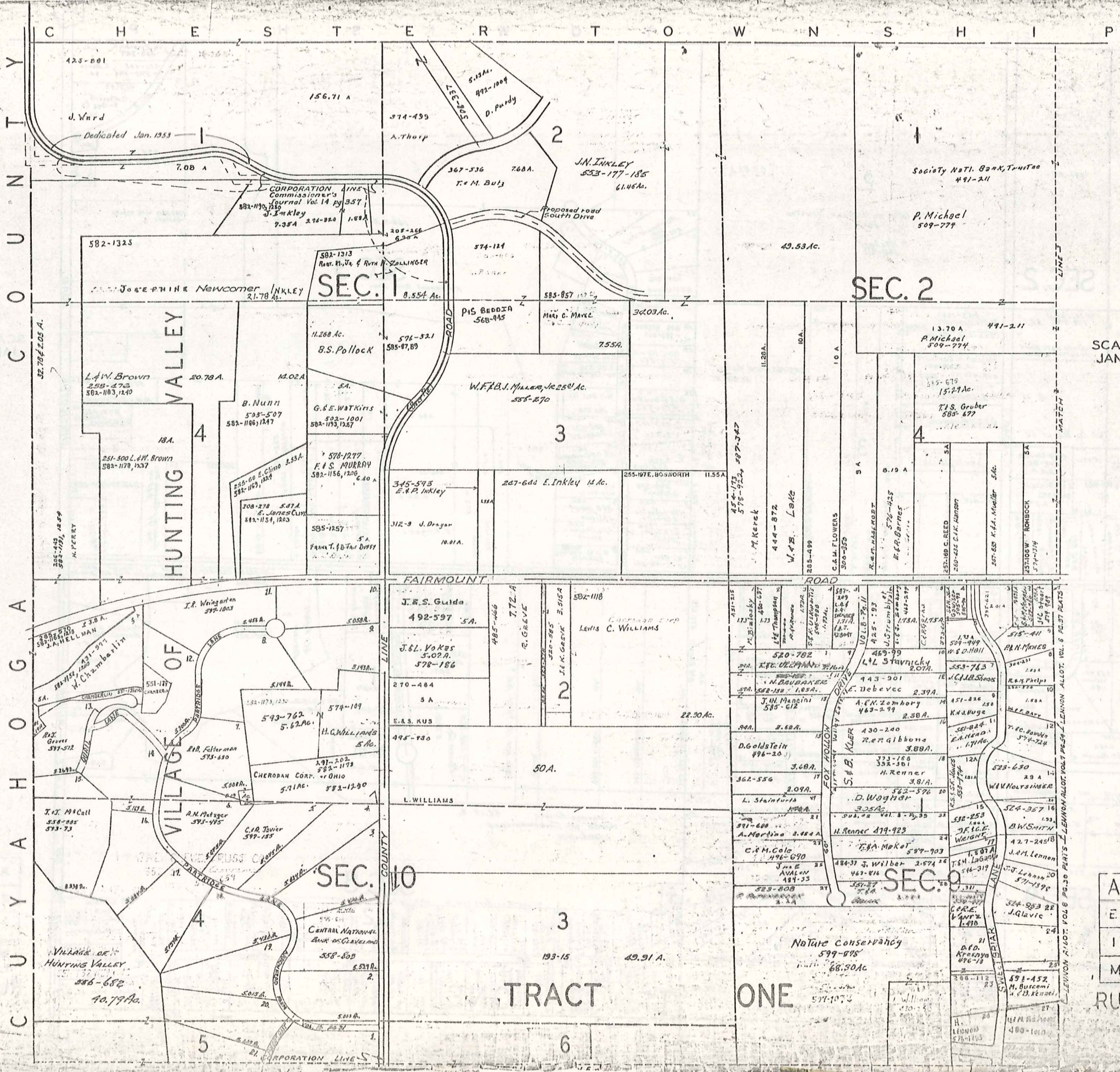
## RUSSELL TOWNSHIP

SCALE: 1" = 2000'

Q. J. ROBINSON  
GEAUGA COUNTY ENGINEER

- UNPAVED ROAD
- == PAVED ROAD
- - - - RAILROAD
- TOWNSHIP LINE
- COUNTY LINE
- CORPORATION LINE





SCALE 1" = 300'  
 JAN. 1, 1975



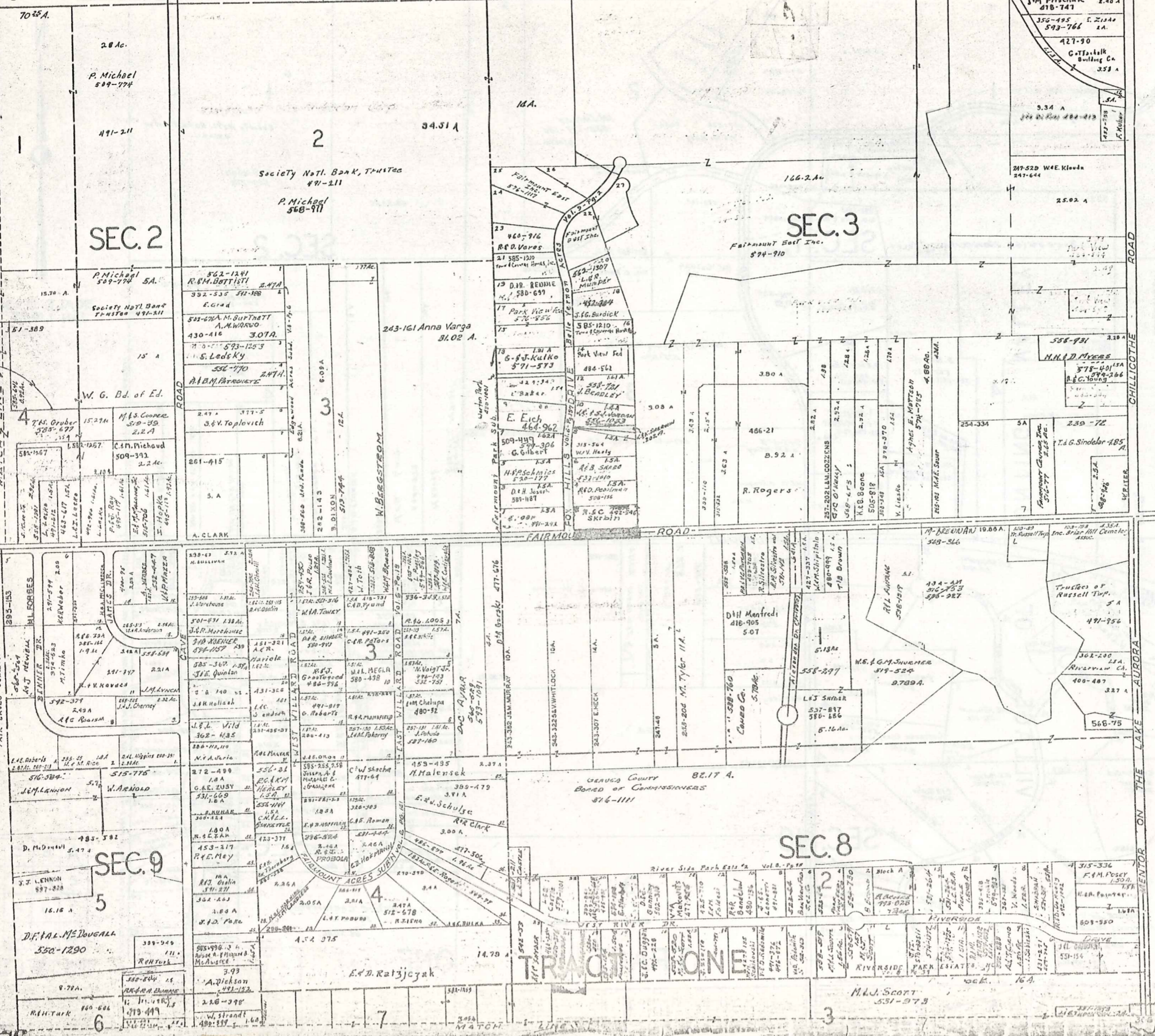
A	B	C	D
E	F	G	H
I	J	K	L
M	N	O	P

RUSSELL TRACT ONE

C H E S T E R T O W N S H I P



SCALE 1" = 300'  
JAN. 1, 1977



A	B	C	D
E	F	G	H
I	J	K	L
M	N	O	P

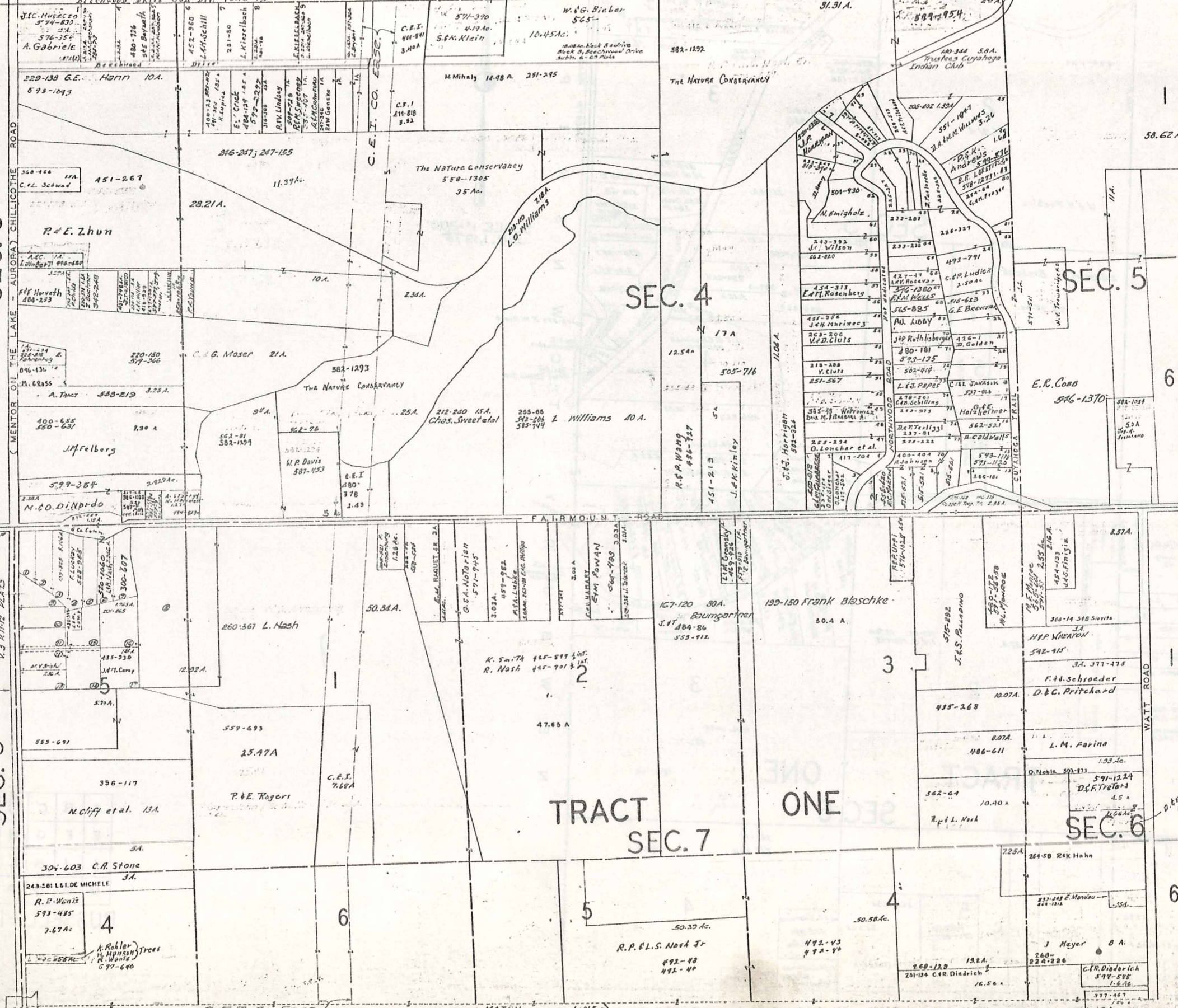
RUSSELL-B

306

C H E S T E R T O W N S H I P

SEC. 3

SEC. 8



SCALE 1" = 300'  
JAN. 1, 1978

A	B	C	D
E	F	G	H
I	J	K	L
M	N	O	P

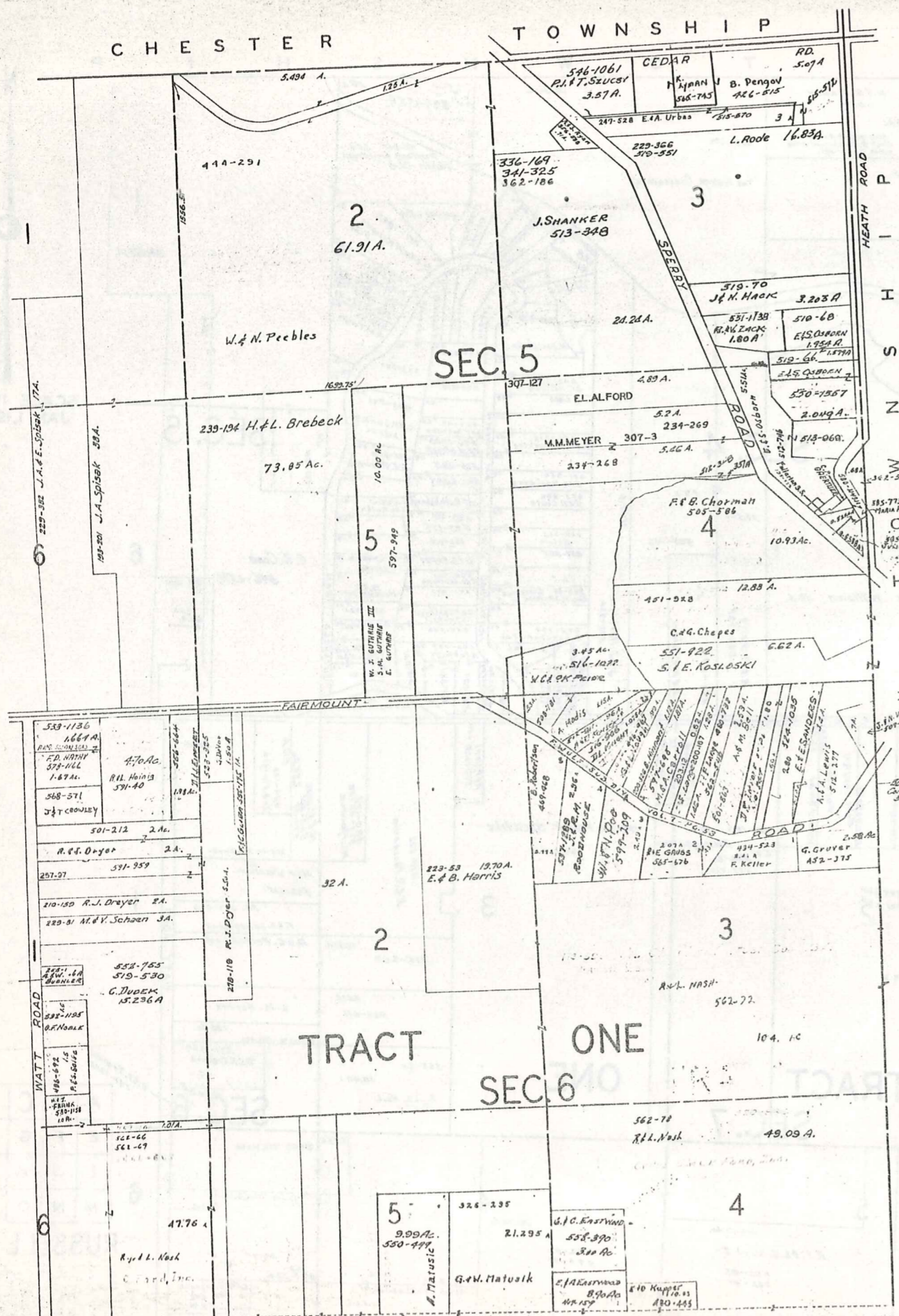
RUSSELL-C

CHESTER

TOWNSHIP



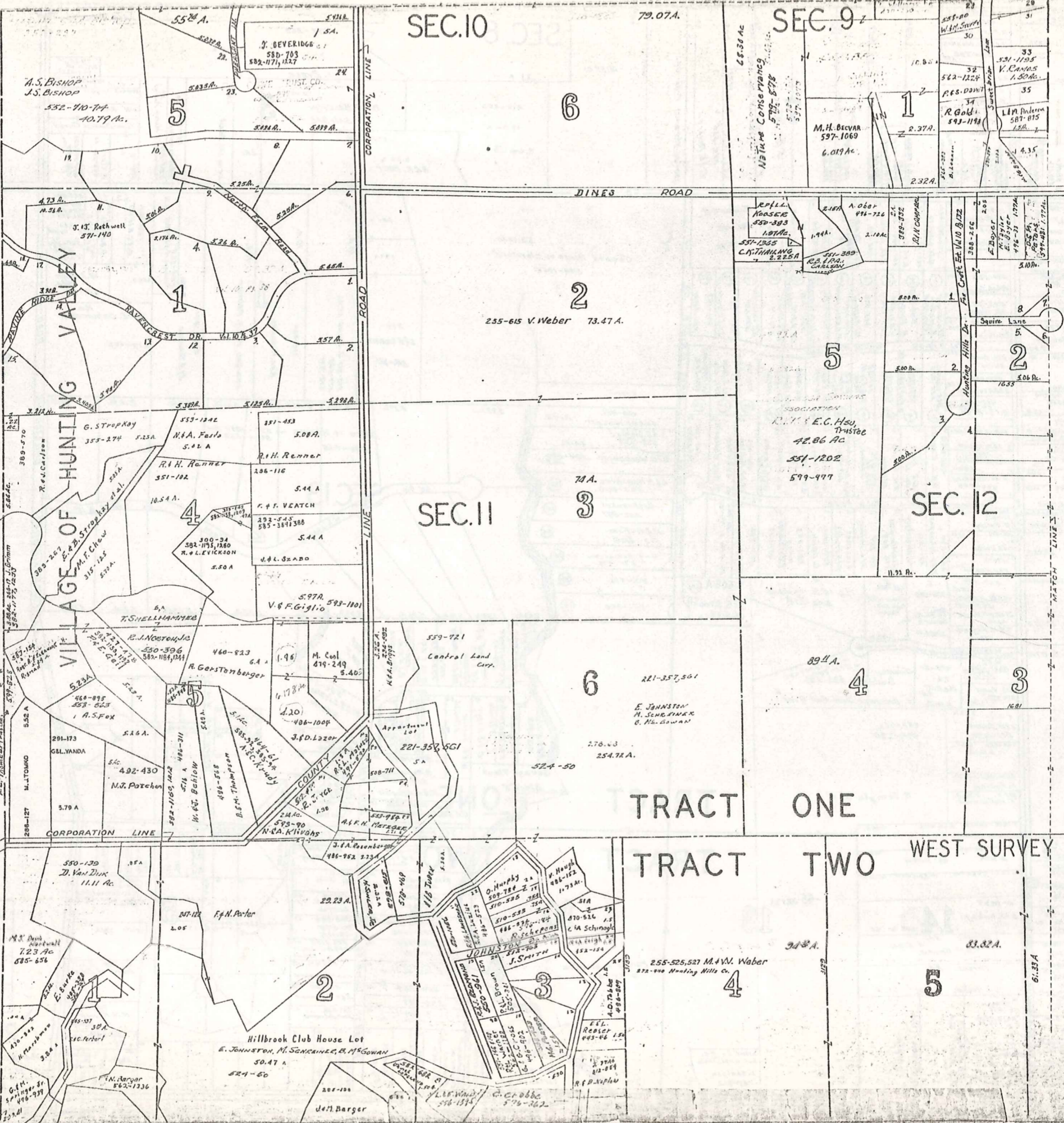
SCALE 1" = 300'  
JAN. 1, 1978



A	B	C	D
E	F	G	H
I	J	K	L
M	N	O	P

RUSSELL - D

C O U N T Y  
C O U N T Y  
C O U N T Y  
C O U N T Y  
C O U N T Y



SEC. 10

SEC. 9

SEC. 11

SEC. 12

TRACT ONE

TRACT TWO

WEST SURVEY

A	B	C	D
E	F	G	H
I	J	K	L
M	N	O	P

RUSSELL - E

SCALE 1" = 300'  
JAN. 1, 1937

SEC. 8

SEC. 9

6

7

SEC. 13

SEC. 2

TRACT ONE

TRACT TWO

13

10

5

A	B	C	D
E	F	G	H
I	J	K	L
M	N	O	P

RUSSELL - F

SCALE 1"=300'  
JAN. 1, 1979

Chabad House of Cleveland  
574-1009

Sewage Plant  
Block A

Marcus L. Smytha  
492-751

J. Sinclair  
464-866

S. Pennillo  
538-1056

R. A. Nelson  
350-1201

G. C. G. Jacobson  
501-500

J. D. Etoia  
562-271

P. M. Brand  
470-850

J. M. Culer  
374-251

M. H. Inc.  
502-1048

F. S. Knight  
541-743

M. S. A. L. Smith  
520-1047

550-984

593-377

J. A. F. Inc.

J. E. W. Inc.

J. E. W. Inc.

J. E. W. Inc.

J. E. W. Inc.

J. E. W. Inc.

J. E. W. Inc.

J. E. W. Inc.

J. E. W. Inc.

J. E. W. Inc.

J. E. W. Inc.

J. E. W. Inc.

J. E. W. Inc.

J. E. W. Inc.

J. E. W. Inc.

J. E. W. Inc.

J. E. W. Inc.

J. E. W. Inc.

J. E. W. Inc.

J. E. W. Inc.

J. E. W. Inc.

J. E. W. Inc.

J. E. W. Inc.

J. E. W. Inc.

J. E. W. Inc.

J. E. W. Inc.

J. E. W. Inc.

J. E. W. Inc.

J. E. W. Inc.

J. E. W. Inc.

J. E. W. Inc.

J. E. W. Inc.

J. E. W. Inc.

J. E. W. Inc.

J. E. W. Inc.

J. E. W. Inc.

J. E. W. Inc.

J. E. W. Inc.

J. E. W. Inc.

J. E. W. Inc.

J. E. W. Inc.

J. E. W. Inc.

J. E. W. Inc.

J. E. W. Inc.

J. E. W. Inc.

J. E. W. Inc.

J. E. W. Inc.

J. E. W. Inc.

J. E. W. Inc.

J. E. W. Inc.

J. E. W. Inc.

J. E. W. Inc.

J. E. W. Inc.

J. E. W. Inc.

J. E. W. Inc.

J. E. W. Inc.

J. E. W. Inc.

J. E. W. Inc.

J. E. W. Inc.

J. E. W. Inc.

J. E. W. Inc.

J. E. W. Inc.

J. E. W. Inc.

J. E. W. Inc.

J. E. W. Inc.

J. E. W. Inc.

J. E. W. Inc.

J. E. W. Inc.

J. E. W. Inc.

J. E. W. Inc.

J. E. W. Inc.

J. E. W. Inc.

J. E. W. Inc.

J. E. W. Inc.

J. E. W. Inc.

J. E. W. Inc.

J. E. W. Inc.

J. E. W. Inc.

J. E. W. Inc.

J. E. W. Inc.

J. E. W. Inc.

J. E. W. Inc.

J. E. W. Inc.

J. E. W. Inc.

J. E. W. Inc.

J. E. W. Inc.

J. E. W. Inc.

J. E. W. Inc.

J. E. W. Inc.

J. E. W. Inc.

J. E. W. Inc.

J. E. W. Inc.

J. E. W. Inc.

J. E. W. Inc.

J. E. W. Inc.

J. E. W. Inc.

J. E. W. Inc.

J. E. W. Inc.

J. E. W. Inc.

J. E. W. Inc.

J. E. W. Inc.

J. E. W. Inc.

J. E. W. Inc.

J. E. W. Inc.

J. E. W. Inc.

J. E. W. Inc.

J. E. W. Inc.

J. E. W. Inc.

J. E. W. Inc.

J. E. W. Inc.

J. E. W. Inc.

J. E. W. Inc.

J. E. W. Inc.

J. E. W. Inc.

J. E. W. Inc.

J. E. W. Inc.

J. E. W. Inc.

J. E. W. Inc.

J. E. W. Inc.

J. E. W. Inc.

J. E. W. Inc.

J. E. W. Inc.

J. E. W. Inc.

J. E. W. Inc.

J. E. W. Inc.

J. E. W. Inc.

J. E. W. Inc.

J. E. W. Inc.

J. E. W. Inc.

J. E. W. Inc.

J. E. W. Inc.

J. E. W. Inc.

J. E. W. Inc.

J. E. W. Inc.

J. E. W. Inc.

J. E. W. Inc.

J. E. W. Inc.

J. E. W. Inc.

J. E. W. Inc.

J. E. W. Inc.

J. E. W. Inc.

J. E. W. Inc.

J. E. W. Inc.

J. E. W. Inc.

J. E. W. Inc.

J. E. W. Inc.

J. E. W. Inc.

J. E. W. Inc.

J. E. W. Inc.

J. E. W. Inc.

J. E. W. Inc.

J. E. W. Inc.

J. E. W. Inc.

J. E. W. Inc.

J. E. W. Inc.

J. E. W. Inc.

J. E. W. Inc.

J. E. W. Inc.

J. E. W. Inc.

J. E. W. Inc.

J. E. W. Inc.

J. E. W. Inc.

J. E. W. Inc.

J. E. W. Inc.

J. E. W. Inc.

J. E. W. Inc.

J. E. W. Inc.

J. E. W. Inc.

J. E. W. Inc.

J. E. W. Inc.

J. E. W. Inc.

J. E. W. Inc.

J. E. W. Inc.

J. E. W. Inc.

J. E. W. Inc.

J. E. W. Inc.

J. E. W. Inc.

J. E. W. Inc.

J. E. W. Inc.

J. E. W. Inc.

J. E. W. Inc.

J. E. W. Inc.

J. E. W. Inc.

J. E. W. Inc.

J. E. W. Inc.

J. E. W. Inc.

J. E. W. Inc.

J. E. W. Inc.

J. E. W. Inc.

J. E. W. Inc.

J. E. W. Inc.

J. E. W. Inc.

J. E. W. Inc.

J. E. W. Inc.

J. E. W. Inc.

J. E. W. Inc.

J. E. W. Inc.

J. E. W. Inc.

J. E. W. Inc.

J. E. W. Inc.

J. E. W. Inc.

J. E. W. Inc.

J. E. W. Inc.

J. E. W. Inc.

J. E. W. Inc.

J. E. W. Inc.

J. E. W. Inc.

J. E. W. Inc.

J. E. W. Inc.

J. E. W. Inc.

J. E. W. Inc.

J. E. W. Inc.

J. E. W. Inc.

J. E. W. Inc.

J. E. W. Inc.

J. E. W. Inc.

J. E. W. Inc.

J. E. W. Inc.

J. E. W. Inc.

J. E. W. Inc.

J. E. W. Inc.

J. E. W. Inc.

J. E. W. Inc.

J. E. W. Inc.

J. E. W. Inc.

J. E. W. Inc.

J. E. W. Inc.

J. E. W. Inc.

J. E. W. Inc.

J. E. W. Inc.

J. E. W. Inc.

J. E. W. Inc.

J. E. W. Inc.

J. E. W. Inc.

J. E. W. Inc.

J. E. W. Inc.

J. E. W. Inc.

J. E. W. Inc.

J. E. W. Inc.

J. E. W. Inc.

J. E. W. Inc.

J. E. W. Inc.

J. E. W. Inc.

J. E. W. Inc.

J. E. W. Inc.

J. E. W. Inc.

J. E. W. Inc.

J. E. W. Inc.

J. E. W. Inc.

J. E. W. Inc.

J. E. W. Inc.

J. E. W. Inc.

J. E. W. Inc.

J. E. W. Inc.

J. E. W. Inc.

J. E. W. Inc.

J. E. W. Inc.

J. E. W. Inc.

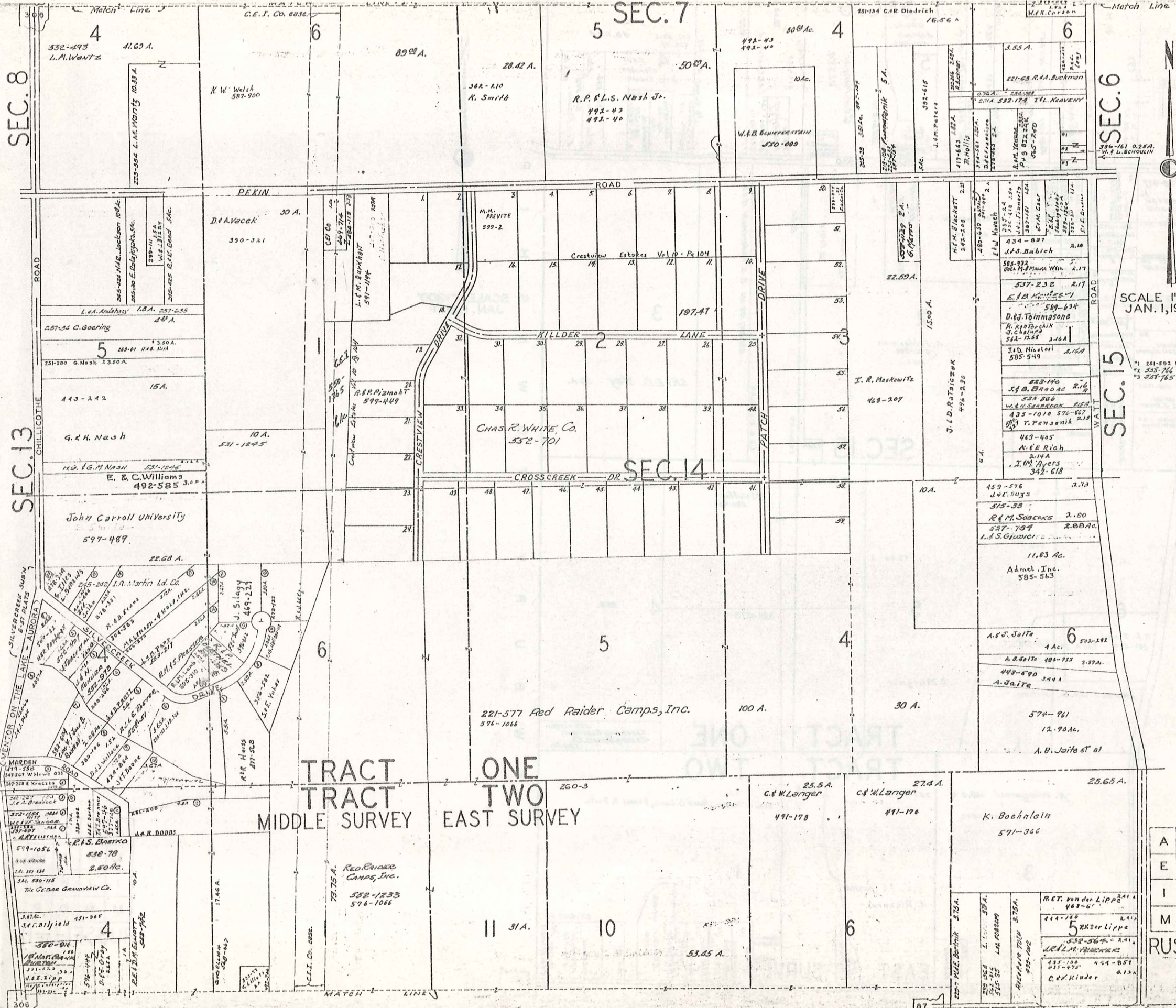
J. E. W. Inc.

J. E. W. Inc.

J. E. W. Inc.

J. E. W. Inc.

J.



SCALE 1" = 300'  
 JAN. 1, 1974

\* 261-592 W.L. Schoulin 0.50 A.  
 \* 255-766 C.T. Adams 0.38 A.  
 \* 258-765 C.W. Adams 0.50 A.

A	B	C	D
E	F	G	H
I	J	K	L
M	N	O	P

RUSSELL-G

SEC. 6

SEC. 15

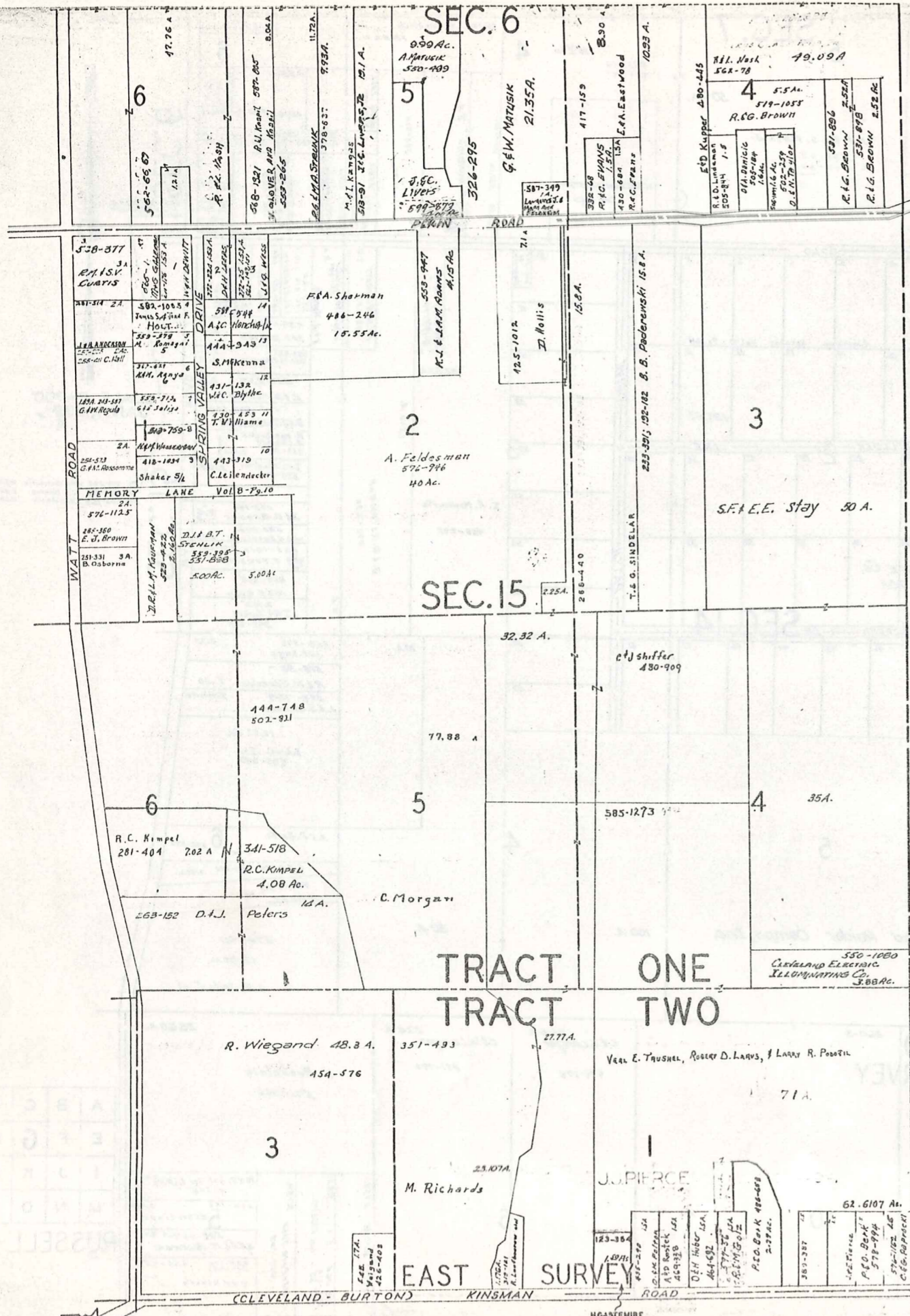


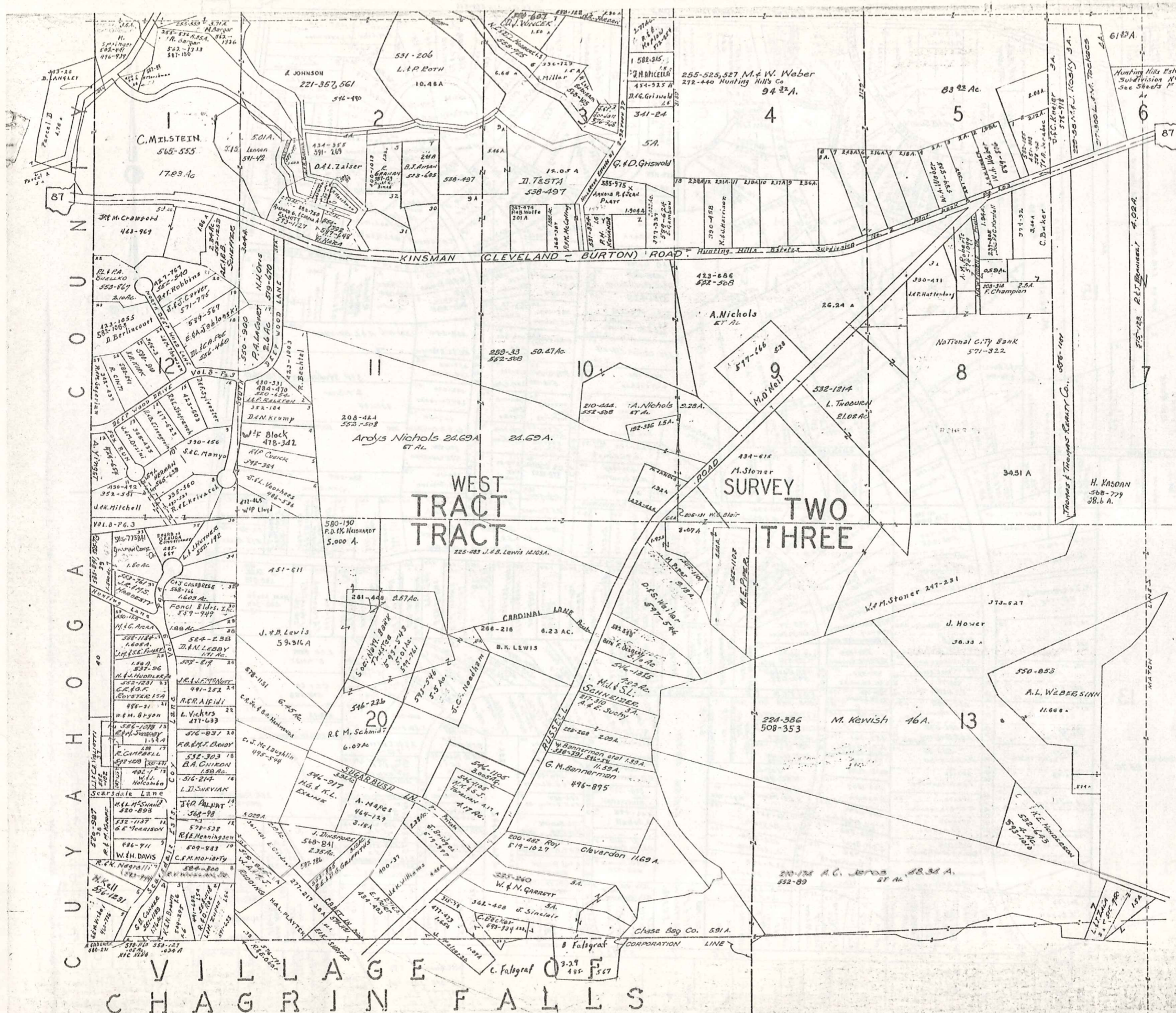
SCALE 1"=300'  
JAN. 1, 1977

P  
I  
H  
N  
W  
O  
T  
Y  
R  
U  
B  
W  
E  
N

A	B	C	D
E	F	G	H
I	J	K	L
M	N	O	P

RUSSELL-H





N

SCALE 1"=300'  
JAN. 1, 1977

A	B	C	D
E	F	G	H
I	J	K	L
M	N	O	P

RUSSELL-T

# VILLAGE OF CHAGRIN FALLS

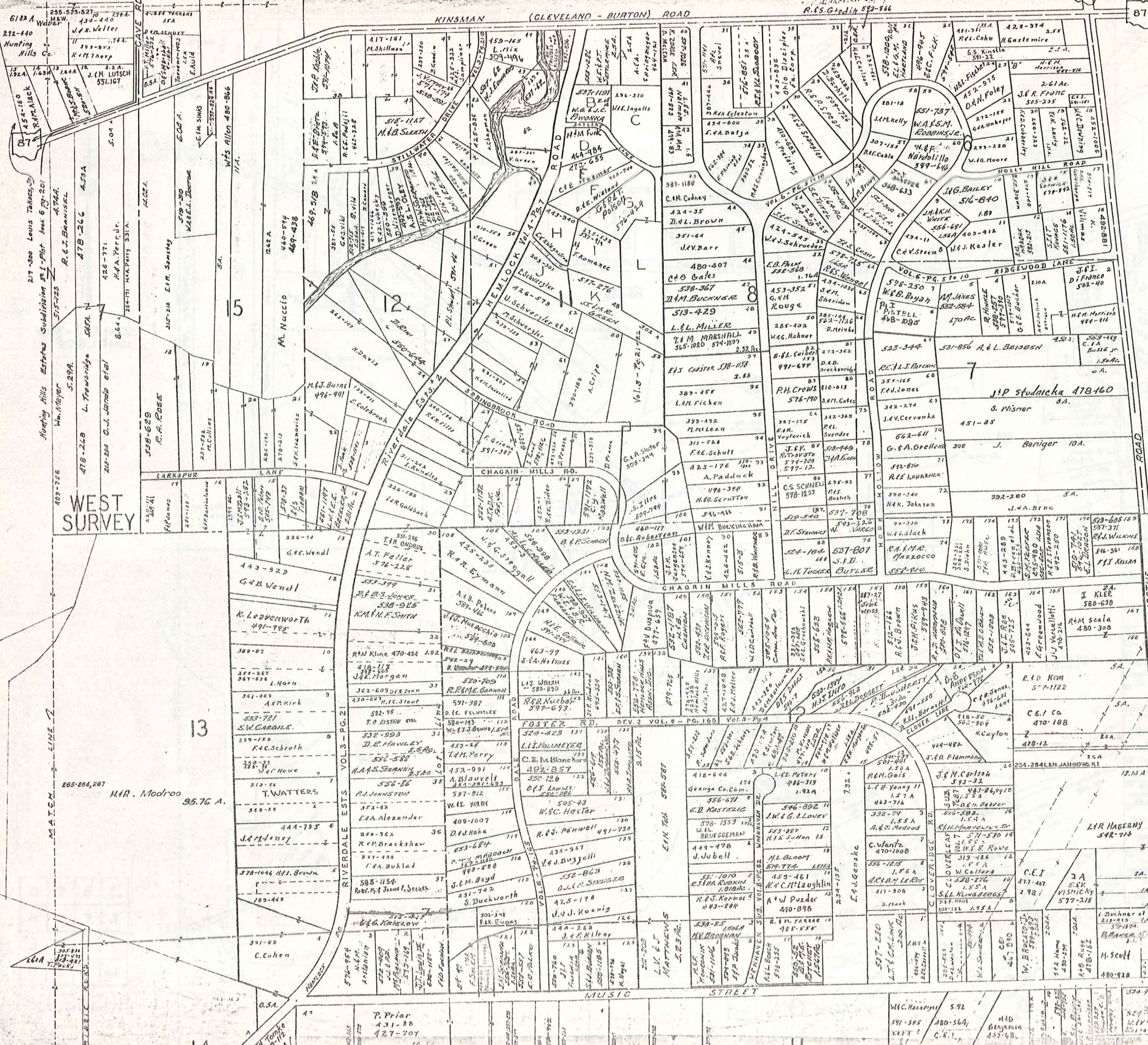
KINSMAN (CLEVELAND - BURTON) ROAD

R. 65-66-67-68-69-70-71-72-73-74-75-76-77-78-79-80-81-82-83-84-85-86

87



SCALE 1" = 300'  
JAN. 1, 1978



WEST SURVEY

MATCH LINE

13

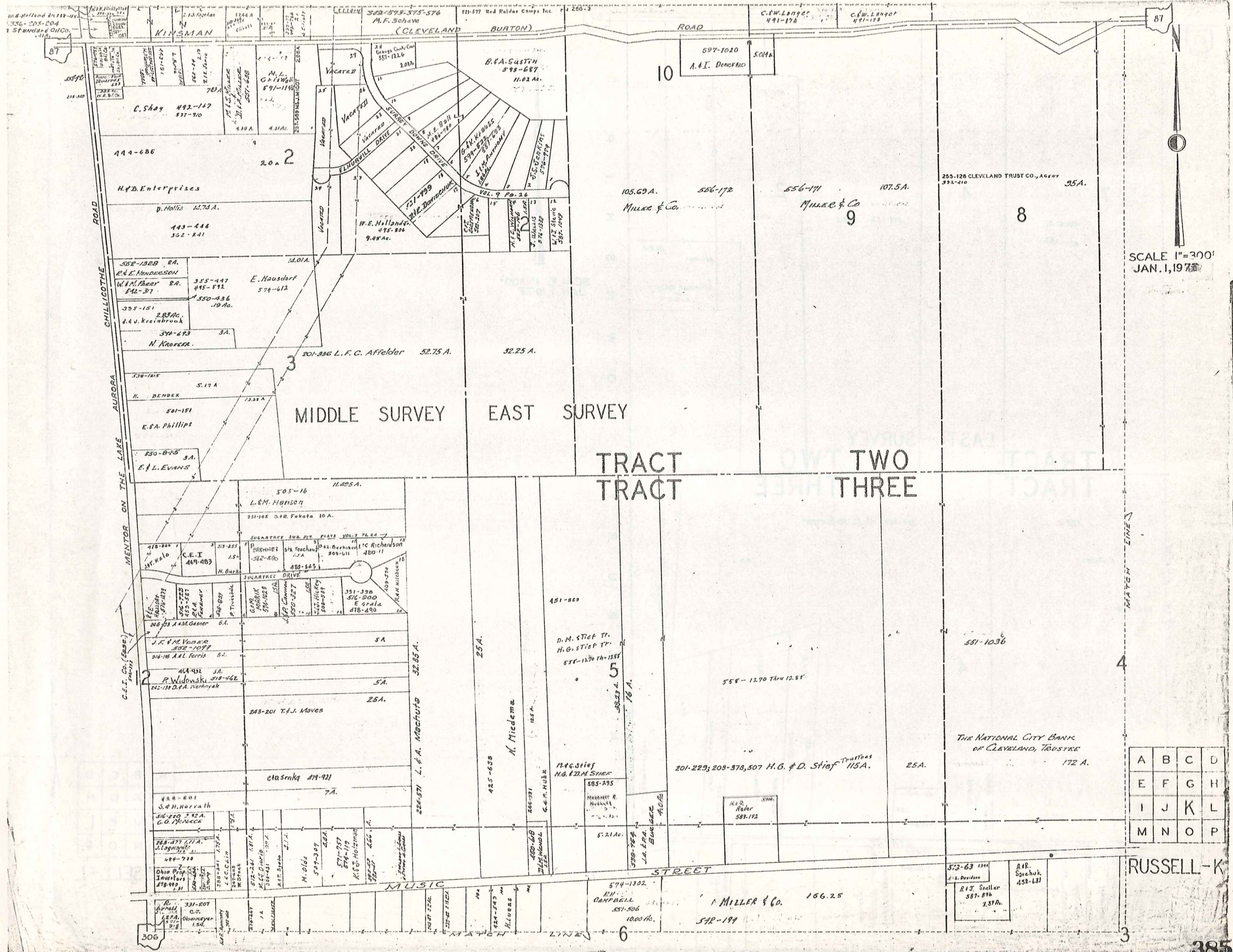
14

CHILLICOTHE ROAD

AURORA

A	B	C	D
E	F	G	H
I	J	K	L
M	N	O	P

RUSSEL

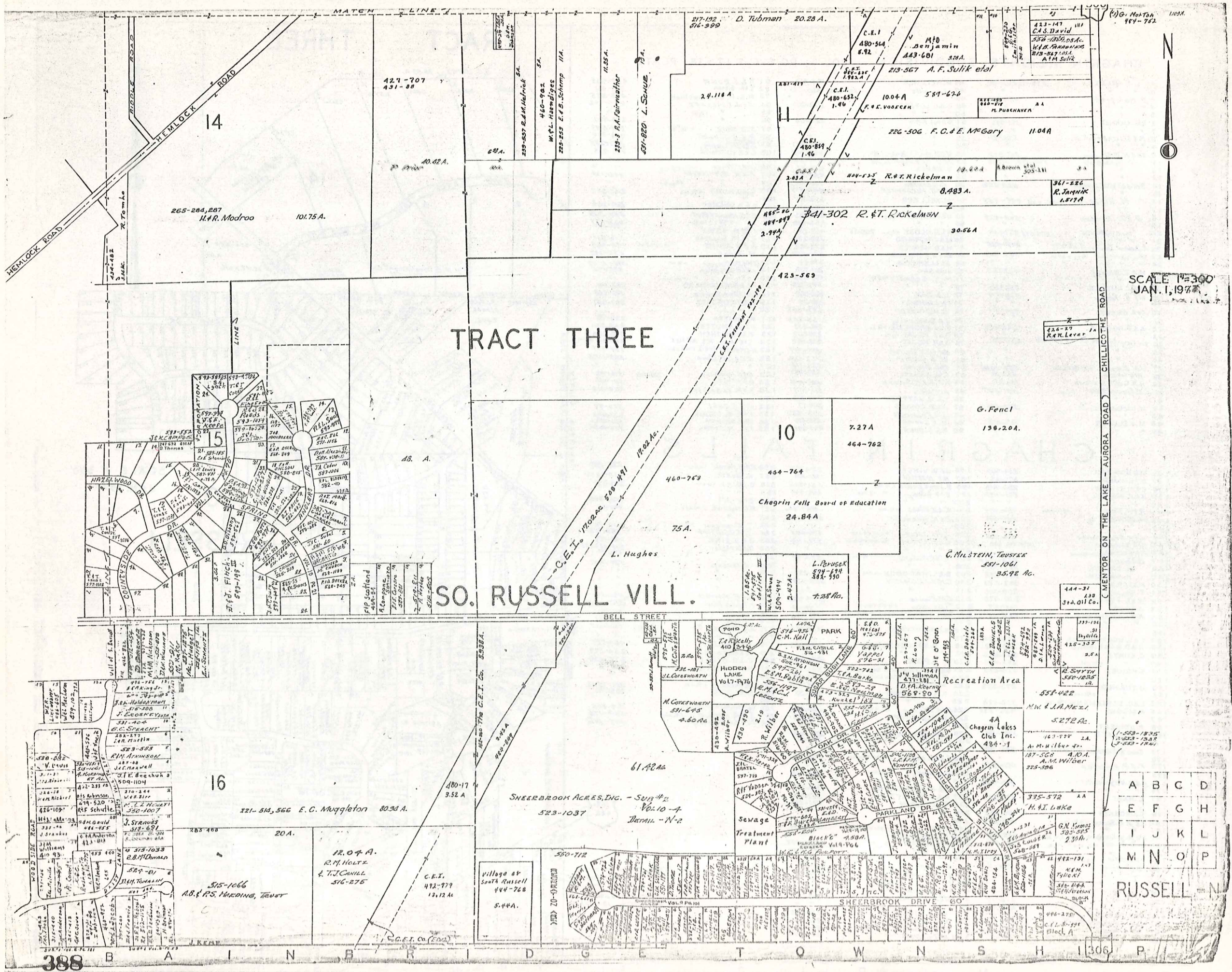


SCALE 1"=300'  
 JAN. 1, 1973

A	B	C	D
E	F	G	H
I	J	K	L
M	N	O	P







(2) G. Not-Tak 184-762

SCALE 1"=300'  
JAN. 1, 1917

# TRACT THREE

## SO. RUSSELL VILL.

A	B	C	D
E	F	G	H
I	J	K	L
M	N	O	P

RUSSELL - N

# SHEERBROOK ACRES No 2

SITUATED PARTLY IN THE VILLAGE OF SOUTH RUSSELL AND PARTLY IN BAINBRIDGE TOWNSHIP, COUNTY OF BRUNSWICK, STATE OF OHIO; AND KNOWN AS BEING PART OF ORIGINAL RUSSELL TOWNSHIP LOT # 3 AND PART OF ORIGINAL BAINBRIDGE TOWNSHIP LOT # 26, TRACT # 1

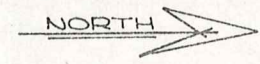
I, THE UNDERSIGNED, CERTIFY THAT I HAVE MADE A BOUNDARY SURVEY OF THE PROPERTY SHOWN HEREON, AND DO CERTIFY THAT IT IS CORRECT.

BY: *Carl D. Gonsbraker*  
CARL D. GONSBRAKER, SURV. 5580

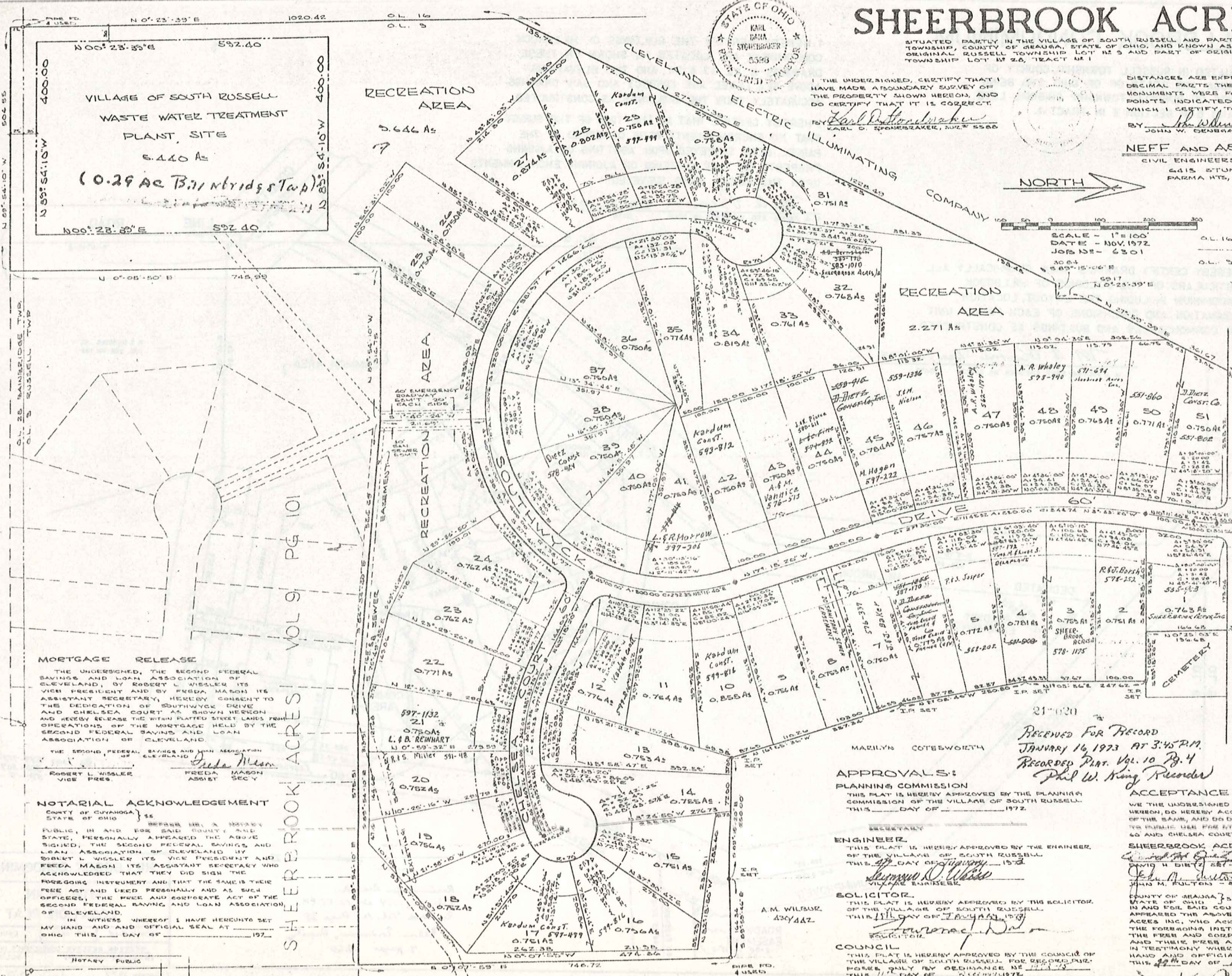
DISTANCES ARE EXPRESSED IN FEET AND DECIMAL PARTS THEREOF. 1200 PINS OR MONUMENTS WERE FOUND OR SET AT ALL POINTS INDICATED HEREON, ALL OF WHICH I CERTIFY TO BE CORRECT.

BY: *John W. Gensler*  
JOHN W. GENSLER, SURV. 4533

**NEFF AND ASSOCIATES**  
CIVIL ENGINEERS AND SURVEYORS  
6415 STUMPH ROAD  
PARMA HTS, OHIO 44130



SCALE - 1" = 100'  
DATE - NOV. 1972  
JOB NO - 6301



AREAS	
LOTS	38,995 AS
RECREATION	11,917 AS
ROADS	5,110 AS
	56,022 AS
S.T.P. SITE	5,440 AS
TOTAL	61,462 AS

S. Russell Hill 61.17  
Dain bridge Top 0.21

**MORTGAGE RELEASE**  
THE UNDERSIGNED, THE SECOND FEDERAL SAVINGS AND LOAN ASSOCIATION OF CLEVELAND, BY ROBERT L. WISLER ITS VICE PRESIDENT AND BY FREDA MASON ITS ASSISTANT SECRETARY, HEREBY CONSENT TO THE DEDICATION OF SOUTHWYCK DRIVE AND CHELSEA COURT AS SHOWN HEREON AND HEREBY RELEASE THE WITHIN PLATTED STREET LINES FROM OPERATIONS OF THE MORTGAGE HELD BY THE SECOND FEDERAL SAVINGS AND LOAN ASSOCIATION OF CLEVELAND.

THE SECOND FEDERAL SAVINGS AND LOAN ASSOCIATION OF CLEVELAND  
*Freda Mason*  
FREDA MASON  
ASSIST. SECY

**NOTARIAL ACKNOWLEDGEMENT**  
COUNTY OF CUYAHOGA } ss  
STATE OF OHIO }  
BEFORE ME, A NOTARY PUBLIC, IN AND FOR SAID COUNTY AND STATE, PERSONALLY APPEARED THE ABOVE SIGNED, THE SECOND FEDERAL SAVINGS AND LOAN ASSOCIATION OF CLEVELAND BY ROBERT L. WISLER ITS VICE PRESIDENT AND FREDA MASON ITS ASSISTANT SECRETARY WHO ACKNOWLEDGED THAT THEY DID SIGN THE FOREGOING INSTRUMENT AND THAT THE SAME IS THEIR FREE ACT AND DEED PERSONALLY AND AS SUCH OFFICERS; THE FREE AND COOPERATE ACT OF THE SECOND FEDERAL SAVINGS AND LOAN ASSOCIATION OF CLEVELAND.

IN WITNESS WHEREOF I HAVE HEREUNTO SET MY HAND AND OFFICIAL SEAL AT CLEVELAND, OHIO, THIS 11th DAY OF JANUARY, 1973.

Notary Public

RECEIVED FOR RECORD  
JANUARY 16 1973 AT 3:45 P.M.  
RECORDED PLAT. VOL. 10 PG. 4  
*Phil W. King Recorder*

**APPROVALS:**  
PLANNING COMMISSION  
THIS PLAN IS HEREBY APPROVED BY THE PLANNING COMMISSION OF THE VILLAGE OF SOUTH RUSSELL THIS 11th DAY OF JANUARY 1973.

**ENGINEER**  
THIS PLAN IS HEREBY APPROVED BY THE ENGINEER OF THE VILLAGE OF SOUTH RUSSELL THIS 11th DAY OF JANUARY 1973.  
*Thomas J. White*  
VILLAGE ENGINEER

**SOLICITOR**  
THIS PLAN IS HEREBY APPROVED BY THE SOLICITOR OF THE VILLAGE OF SOUTH RUSSELL THIS 11th DAY OF JANUARY 1973.  
*James J. ...*  
SOLICITOR

**COUNCIL**  
THIS PLAN IS HEREBY APPROVED BY THE COUNCIL OF THE VILLAGE OF SOUTH RUSSELL FOR RECORDED PURPOSES ONLY BY ORDINANCE NO. 1173-73 THIS 11th DAY OF JANUARY 1973.

**ACCEPTANCE & DEDICATION**  
WE, THE UNDERSIGNED OWNERS OF THE LAND SHOWN HEREON, DO HEREBY ACCEPT THIS PLAN AND SUBDIVISION OF THE SAME, AND DO DEDICATE AND IMPROVE HEREWITH TO PUBLIC USE FREE STREET PURSUING SOUTHWYCK DRIVE 40 AND CHELSEA COURT 40 AS SHOWN HEREON.

**SHEERBROOK ACRES INC.**  
*David H. ...*  
DAVID H. ... PRES  
*John M. ...*  
JOHN M. ... SECY

COUNTY OF BRUNSWICK, S.S. BEFORE ME, A NOTARY PUBLIC, STATE OF OHIO, IN AND FOR SAID COUNTY AND STATE, PERSONALLY APPEARED THE ABOVE SIGNED OFFICERS OF SHEERBROOK ACRES INC. WHO ACKNOWLEDGED THAT THEY DID SIGN THE FOREGOING INSTRUMENT AND THAT THE SAME IS THE FREE AND COOPERATE ACT OF SAID CORPORATION AND THEIR FREE ACT AND DEED INDIVIDUALLY IN TESTIMONY WHEREOF I HAVE HEREUNTO SET MY HAND AND OFFICIAL SEAL AT CLEVELAND, OHIO, THIS 11th DAY OF JANUARY 1973.

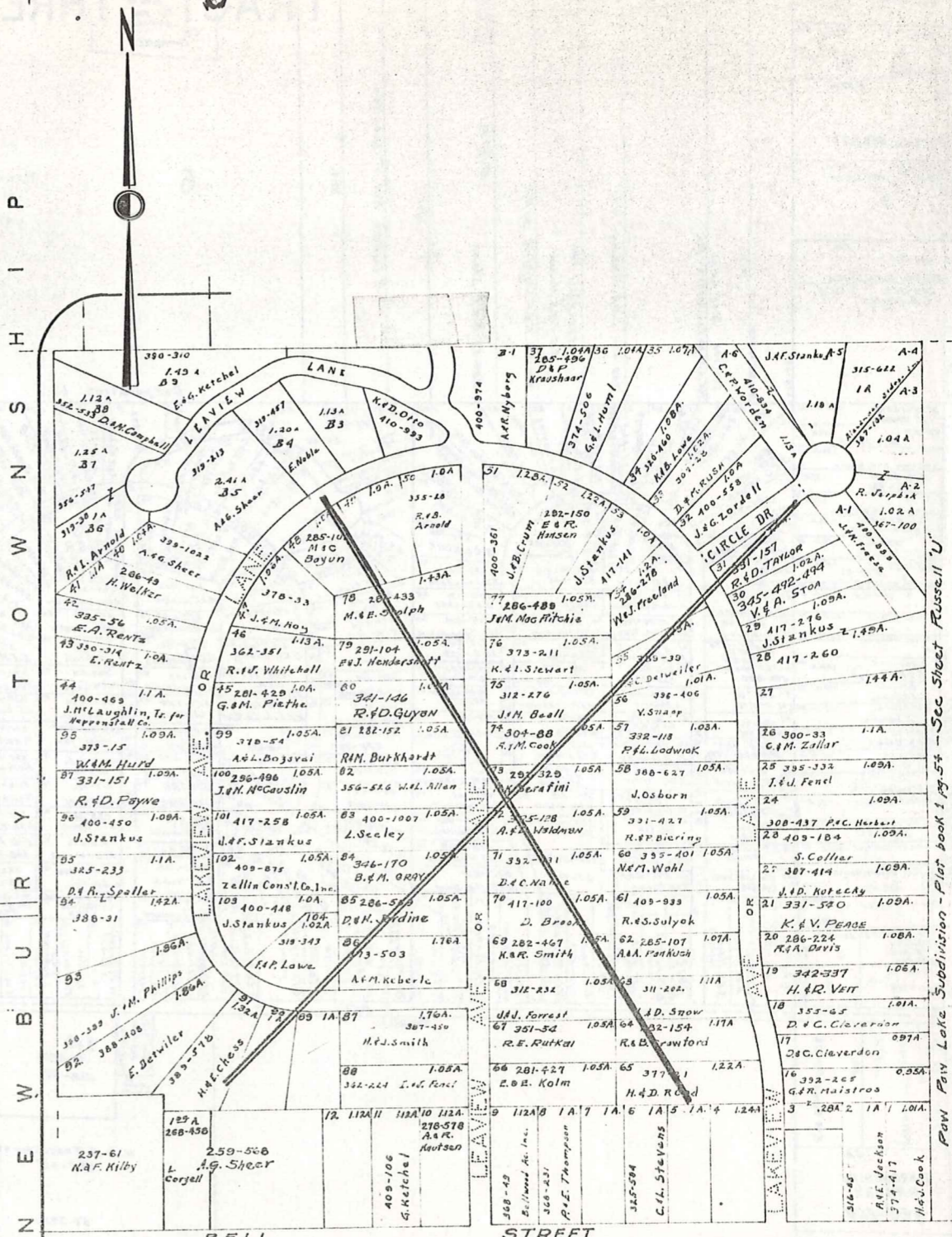
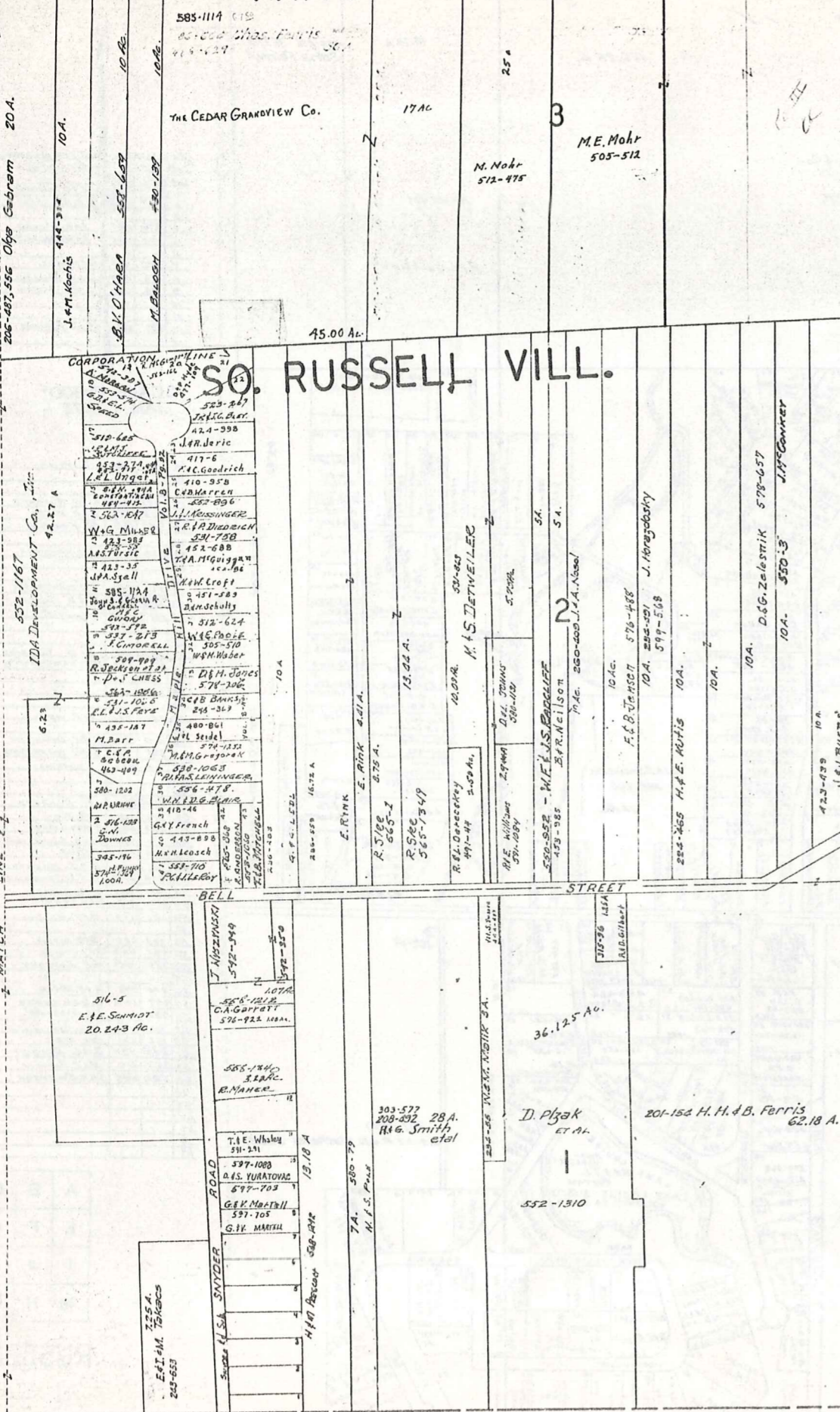
*John M. ...*  
NOTARY PUBLIC  
JANUARY 1977

SHEERBROOK ACRES VOL 9 PG 101

PARKLAND ESTATES VOL. 9 PG 6



# TRACT THREE



**BELL STREET**

Vol. 259 pg. 548 Alfred G. Sheer's "Bellwood Acres Subdivisions"  
 №1 = Sub-lots 1 to 12 incl. at Plat book 6 pg. 189  
 №2 = " " 16 to 37 " 40 to 104 incl. at Plat book 6 pg. 221  
 Scale 1 inch = 200 feet.

202-285 A.G. Sheer to The Bellwood Acres, Inc.  
 Sub-lots 2, 19 incl. - 11-16-21 to 29 incl. - 30 to 36 incl. - 48 to 47 incl.  
 50 to 59 incl. - 65 - 70 to 78 incl. - 80 to 88 incl. - 90 to 93 incl. -  
 100 to 104 incl. - Block A & B

A	B	C	D
E	F	G	H
I	J	K	L
M	N	O	P

JAN. 1, 1972  
**RUSSELL - P**

SCALE: 1" = 300'

Paw Paw Lake Subdivision - Plat book 1 pg. 54 - See Sheet Russell U

# HILLBROOK CONDOMINIUM

SITUATED IN RUSSELL TOWNSHIP, COUNTY OF  
GEAUGA AND STATE OF OHIO AND BEING  
PARTS OF RUSSELL TOWNSHIP ORIGINAL LOTS  
5 AND 6 IN SECTION II IN TRACT 1.

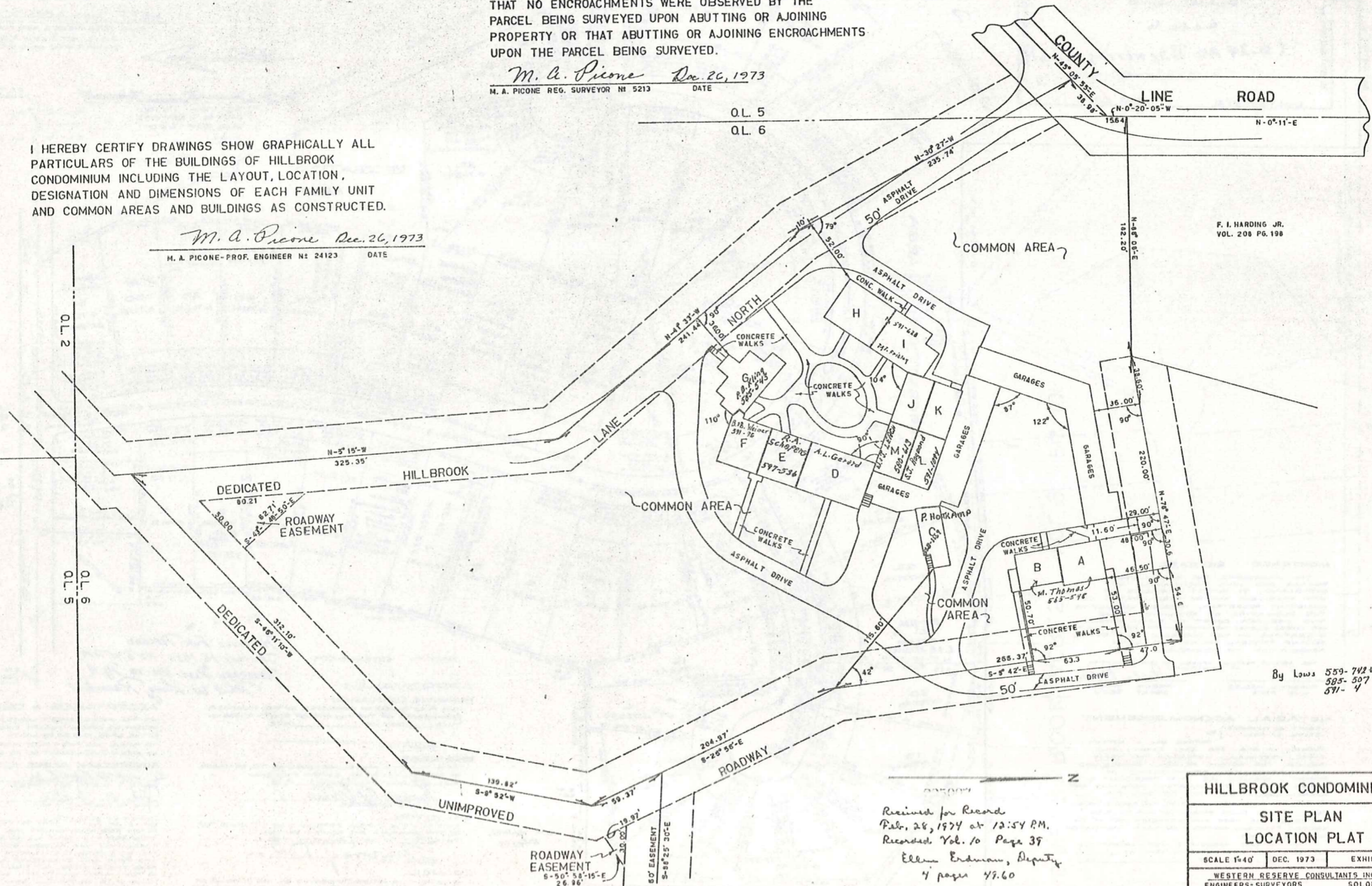
I HEREBY CERTIFY THE BUILDINGS OF HILLBROOK  
CONDOMINIUM ARE LOCATED AS SHOWN ON THESE  
DRAWINGS B, B2, B3 & B4, AND THE ELEVATIONS  
ABOVE SEA LEVEL ARE CORRECT AND SAID DRAWINGS  
ACCURATELY SHOW THE BUILDINGS AS CONSTRUCTED.

I HEREBY CERTIFY THAT AT THE TIME OF THE SURVEY  
THAT NO ENCROACHMENTS WERE OBSERVED BY THE  
PARCEL BEING SURVEYED UPON ABUTTING OR AJJOINING  
PROPERTY OR THAT ABUTTING OR AJJOINING ENCROACHMENTS  
UPON THE PARCEL BEING SURVEYED.

*M. A. Picone* Dec. 26, 1973  
M. A. PICONE REG. SURVEYOR NO. 5213 DATE

I HEREBY CERTIFY DRAWINGS SHOW GRAPHICALLY ALL  
PARTICULARS OF THE BUILDINGS OF HILLBROOK  
CONDOMINIUM INCLUDING THE LAYOUT, LOCATION,  
DESIGNATION AND DIMENSIONS OF EACH FAMILY UNIT  
AND COMMON AREAS AND BUILDINGS AS CONSTRUCTED.

*M. A. Picone* Dec. 26, 1973  
M. A. PICONE - PROF. ENGINEER NO. 24123 DATE



F. I. HARDING JR.  
VOL. 200 P. 198

By Laws 559-742 & 812  
585-507  
571-4

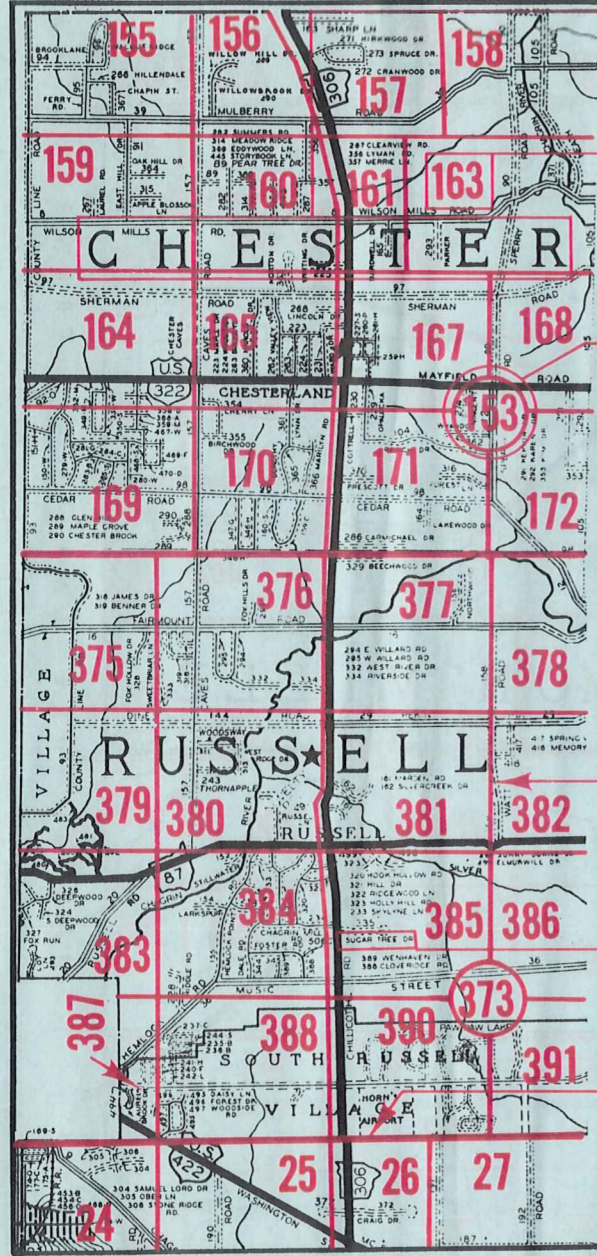
Received for Record  
Febr. 26, 1974 at 12:54 P.M.  
Recorded Vol. 10 Page 39  
Ellen Erdman, Deputy  
4 pages 47.60

HILLBROOK CONDOMINIUM		
SITE PLAN LOCATION PLAT		
SCALE 1"=40'	DEC. 1973	EXHIBIT B
WESTERN RESERVE CONSULTANTS, INC. ENGINEERS - SURVEYORS SOLON, OHIO		

1 JANUARY 1977 10-39

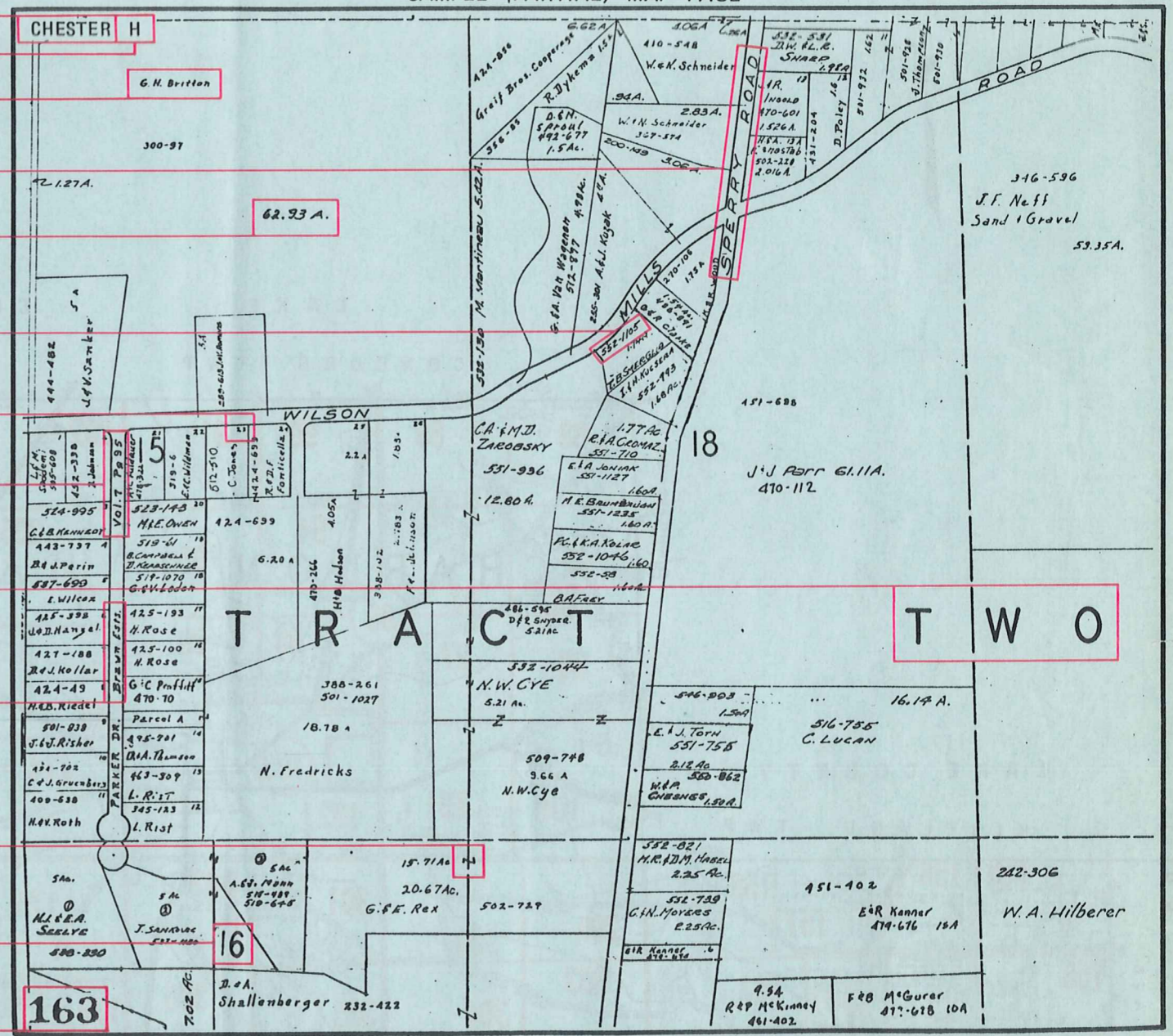
# Explanation and Use Sheet for Geauga County, Ohio

SAMPLE (PARTIAL) COUNTY INDEX MAP



- Township Name
- Map Page Number (Or Letter)
- Owners Name
- Street Name
- Acreage
- Municipality Index Beginning Atlas Page Number
- Deed Book & Page
- Subdivision Lot Number
- Plat Book & Page
- Tract Number
- Atlas Page Boundary
- Subdivision Name
- Street Name
- Denotes Continuous Ownership
- Municipality Index Atlas Page Boundary
- Tract Lot Number
- Atlas Page Number

SAMPLE (PARTIAL) MAP PAGE



## USE OF THE MAP VOLUME

1. LOCATE THE GENERAL AREA OF INTEREST ON THE COUNTY INDEX MAP, ATLAS PAGE 'B'.
2. **A. IF PROPERTY IS IN A TOWNSHIP**, NOTE THE ATLAS PAGE NUMBER. TURN TO THE PAGE INDICATED AND LOCATE SPECIFIC PARCEL OF INTEREST.  
NOTE: ON SOME MAPS YOU MAY BE REFERRED TO A DETAIL SHEET SHOWING AN ENLARGEMENT OF THE AREA. THESE MAPS ARE FOUND AT THE END OF THE REGULAR MAP PAGES IN EACH TOWNSHIP EITHER IN ALPHABETICAL OR NUMERICAL SEQUENCE.
3. **B. IF PROPERTY IS IN A MUNICIPALITY**, REFER TO THE TABLE OF CONTENTS, ATLAS PAGE 'C', AND NOTE THE BEGINNING ATLAS PAGE NUMBER FOR THE MUNICIPALITY OF INTEREST.
  - (1) TURN TO THE PAGE INDICATED. ON THIS PAGE WILL APPEAR AN INDEX MAP FOR THAT MUNICIPALITY.
  - (2) LOCATE SPECIFIC AREA OF INTEREST AND NOTE THE MAP PAGE NUMBER.  
NOTE: DO NOT CONFUSE THE MAP PAGE NUMBER WITH THE ATLAS PAGE NUMBER IN THESE MUNICIPALITIES.
  - (3) FOLLOW EITHER ALPHABETICAL OR NUMERICAL SEQUENCE TO THE MAP PAGE INDICATED AND LOCATE SPECIFIC PARCEL OF INTEREST.